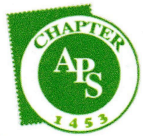




Strait Stamp Talk



July-August 2020

Your Stamp Collecting Newsletter

Volume 22 Issue

Strait Stamp Society meets the first Thursday of the month at the Sequim Library 630 N. Ave., Sequim, Washington at 6:00-8:00 pm. No dues - Donations only. Strait Stamp Talk is a bi-monthly newsletter for the Strait Stamp Society. Send Philatelic news and articles to the editor Dick McCammon, 76 Roberson Rd., Sequim, WA 98382-7335.

Wes Falor - President, Ph. 360-796-4984 Email wftercs@centurylink.net
Bill McCellan - Vice President, Ph. 575-522-9977 Email olympiclog7@gmail.com
Cathie Osborne - Secretary/Treasurer/Show Chairperson, Ph. 360-683-6373
Email rickcath@wavecable.com
Dick McCammon - Newsletter Editor/Webmaster Ph. 360-681-0521
Email mccammon@olypen.com
Richard Tarbuck - Club Photographer, Ph. 360-912-3513
Email eagles-roost@olypen.com

President's Message

Welcome to our July-August Newsletter



Photo by Karen Mckee

Wes Falor

I was glad to see that the June Zoom meeting attracted 11 members. Sorry, I have not attended, but without sound and a camera, there is not much I can do. Hope to have the audio fixed before long. For the July meeting, the show and tell letter of the month is "M" as in Macau, Magyar, Marokko, Military Post, Middle Congo, Mauritius, Memphis, Mobil etc.. I am sure there are many others that you will come up with. Hope everyone is well and enjoying their stamp time. Needless to say, the stamp market is a little mixed at this time. I would guess that come fall, things will have a more "normal" feel than they do now. Most of the stamp buying and selling has been on the internet, instead of hands on, which gives a whole different feel to the hobby.

Continued on page 18

July 2nd MEETING

At the Zoom meeting, there will be a show and tell that begins with the letter "M." Ask any questions you have about stamps or stamp collecting.

August 6th MEETING

At the Zoom meeting, there will be a show and tell that begins with the letter "N."

Contents

Presidents's Message	Page 13,18
Club meetings Jul-Aug	Page 13
The Return Address	Page 14
Did you know?	Page 15
A good book	Page 15
Wild Orchids	Page 16
Secretary's Notes	Page 17-18
Late News	Page 18

page 13

The Return Address is the Story

Roger Heath

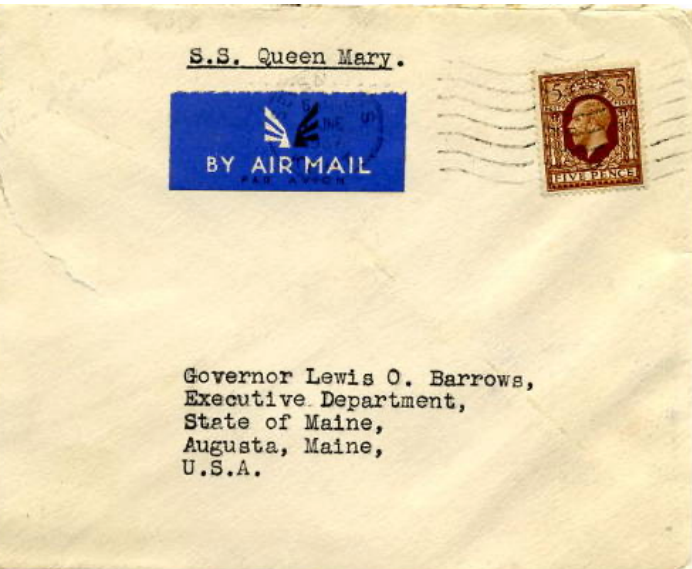


Fig. 1

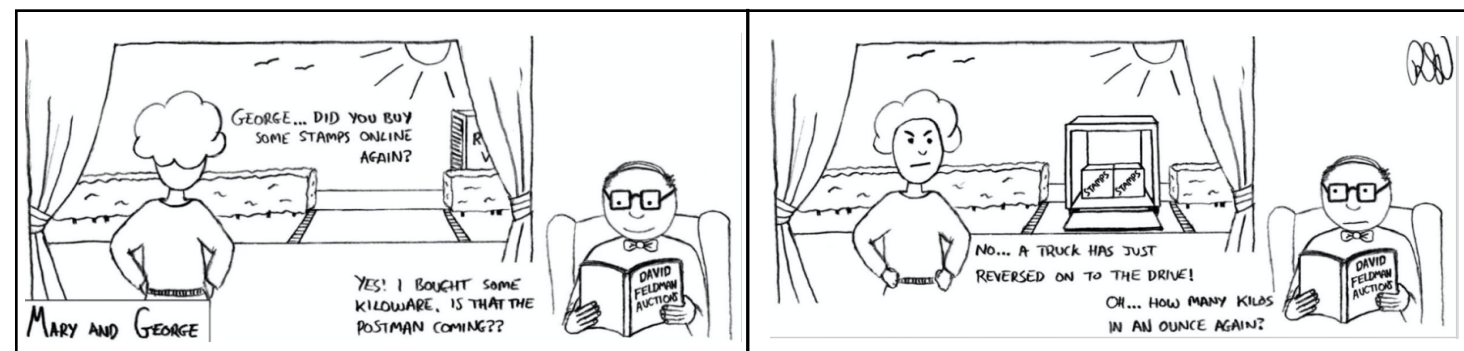


Fig. 2

This cover (Fig.1) posted 1 June 1937 is a basic, ordinary air mail cover addressed to Lewis O. Barrows, the Governor of Maine. The return address on the back as seen above (Fig. 2) is really the story.

Long Barn has an interesting history. Charles Lindbergh and his wife Anne Morrow rented Long Barn, Kent, England, in 1935 to avoid all the publicity of the investigation and trial of their son's kidnapper. The Lindbergh family stayed at Long Barn for three years.

The discovery that the Lindbergh's lived here when the letter was dispatched led to the facts that, "Her father [Dwight Whitney Morrow] was consecutively a lawyer, a partner at J. P. Morgan & Co., United States Ambassador to Mexico, and Senator from New Jersey." Further research revealed there was a long family friendship between Anne's father and Gov. Barrows which led to the Morrow family spending many summers in Maine as guests of the Governor. These trips occurred prior to and after Anne's marriage to Lindbergh in 1929. Since the Governor was a friend of the family, personal correspondence must have continued. My conclusion is that this cover contained a letter written by Anne Morrow to Governor Barrows during her stay at LongBarn.



From an email from Feldman Auctions in Switzerland.

Did You Know?

Phil Castell

Here is a scan (fig. 1) of the order form that is part of the envelope that is still available in the lobby of the Sequim PO. It is for use of ordering stamps from home for Rural or Highway Contract Route Carriers.

I put it in my outgoing mail in Sunland and the next day the envelope was back in my mail box with the stamps enclosed. It was not given any type of cancellation and the PO receipt was taped to the back of the cover and it does show some wear and tear when I removed the receipt.

Very fast and prompt service for those who want to avoid lines at the PO.

Your Name (Last, First, Middle)		Items	Cost	x Qty.	=	Total
Castell		Roll of 100-55¢ Stamps	\$ 55.00	1		\$ 55.00
Your Address (No., st., RR no., city, state, ZIP + 4®)		Book of 20-55¢ Stamps	11.00	2		22.00
113 Hogans Vista		55¢ Plain Stamped Envelope	0.69			
Sequim, WA 98382		55¢ First-Class™ Stamp	0.55			
Dear Customer:		35¢ Postcard Stamp	0.35			
The United States Postal Service® and the National Rural Letter Carriers' Association provide this envelope to make it easy for you to purchase stamps and other postal products.		35¢ Stamped Card	0.39			
Instructions		Other:				
To order:		Other:				
1. Complete the order form.		Other:				
2. Enclose a check or money order for the total amount of your order. Make check or money order payable to "Postmaster."		Other:				
3. Seal the envelope and leave it in your mailbox with the flag up.		Other:				
		Grand Total				\$ 77.00

PS Form 3227-R, January 2019 PSN 7530-01-000-9885 UNITED STATES POSTAL SERVICE®

Fig. 1



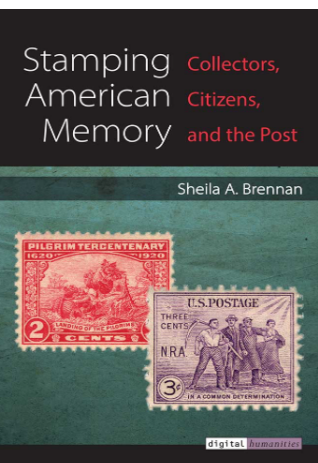
A Good Book

Vera Felts

There is a very good book about the history of stamp collecting that is available free of charge on the internet (or \$70 for a print copy). You can find the info—and in fact, click on and read the various chapters of the entire book—at:

<http://stampingamericanmemory.org/revisions>

In the age of digital communications, it can be difficult to imagine a time when imagery and meaning of stamps was politically volatile while millions of Americans collected stamps from the 1880s to the 1940s. The work explores how the US postal service shaped Americans' concepts of national belonging, citizenship, and race through its commemorative stamp program.



When Stamps and Orchids Collide

Toby Clauson-Falor
Chairperson Olympic Peninsula Orchid Society

On Feb. 21, 2020, the U.S. Postal Service issued double-sided panes of 20 "Wild Orchid Forever" stamps (Fig.1). The stamps represent 10 Orchid species found in the United States. Native orchids are found throughout the United States, and especially on the Olympic Peninsula. In fact, the Olympic Peninsula has most of the wild orchids found in the Pacific Northwest. The Olympic Peninsula has 12 Genera of wild orchids that result in 36 different species.

You have probably walked past some of our wild Olympic orchids without even knowing it. Ask Wes, I remind him every time we walk down to the dock, "Don't step on the orchid." The ten different stamps include 7 Genera. Several of the flowers shown on the stamps are found on the Olympic Peninsula. Enjoy the forever stamps and forever enjoy the wild orchids. Never pick or dig up any native orchids as they are protected. If you wish to find and identify the wild orchids, a great source is: "Wild Orchids of the Pacific Northwest and Canadian Rockies" by Paul Martin Brown.

Have a happy orchid day.



Fig. 1 Double-sided pane of 20 wild orchid stamps

Secretary Notes



Cathie Osborne

May 7th Zoom Meeting

The first Thursday in May hosted our monthly meeting, and twelve brave souls joined together for an informative meeting of social-distance stamping. Dick said the library will be closed until August, so for June 4 and July 2 our meetings will be on zoom.

Plans are ongoing for our August 8 Strait Stamp Show, so don't stop working on your exhibit yet! Remember, a frame holds just six pages, and you may have up to ten frames if you wish. Our cancel is in progress, and our bourse (the dealer component) is full. Cathie has a supply of Linn's. If you would like some, call and she will leave them on her front porch for pick-up.

In general conversation, Rick Kunz encouraged members to go on the APS website, for short educational programs; and to the American Philatelic Research Library, which now has a full run of "La Posta", a postal history magazine, on-line. I believe APS resources are free to all during this month, not just members. Vera is in her new home, still unpacking boxes. Judy had some good questions about exhibiting that were answered by Rick and Vera.

For the letter 'K', David had a negative K cancel from Chicago; he also showed a set of minerals on stamps, both mint and used, from Kenya. Dick showed a Kurdistan local stamp because Kurdistan is not a member of the Universal Postal Union.

Continue upper right

Rick showed some hard to find cancels from South Korea's traveling post offices—a FDC, a postcard, a cover, and a stamp showing a railway post office. He also had a sheet from North Korea showing a railway post office car, from 1974—though none of us thought it was used much by the general population there. Cathie showed a Netherlands meter from Klokkenberg (Bell Mountain) Company. Judy had a triple-K with Kilauea Point Lighthouse on Kauai in Kalihiwai, HI. She also told us about a Russian lady cosmonaut, Elena Kondakova and AsEonaut Janet Kavandi. The latter got her Dr. degree from UW. Vera brought Kahaallit Nunaaat, or Greenland, material to show—her favorite stamp, a cover and a stamp booklet showing the Queen, who will be 80 this year. (Greenland is independent, but has close ties to Denmark. She also had some souvenir sheet honoring the US for giving Europe hope during WWII. Also a post office ad card showing a dog-sled. Neil showed the corner cards from Canadian hotels named after King Edward, from the 30s. There was discussion at the end of the meeting of whether we'll have the show. Cathie is optimistic, but others not so much. To be continued.

June 4th Zoom Meeting

The June meeting was attended by 11 avid collectors. Dick said we might be into phase 3 by July, and if so, we can meet at the library. It has been decided to delay our show until October 17th. A final decision will be announced later.

Judy and Vera shared their experience with the APS Webinars, which are worth exploring if you are a member of the APS. And, if not, now might be a good time to join. Phil reported on his success of ordering stamps with an official carrier order (see "DID YOU KNOW?").

Continued on page 17

Secretary Notes Continued from page 16

For the letter "L," Roger showed Latin American cancels by Gutter. He also talked about some current postal markings on a Swiss to Hong Kong Cover, virus-related. David had covers from Lake Mills, Wi, from and to his great-great grandfather and grandmother. One was a Lady's Cover, postmarked on Lincoln's birthday in 1860. Vera displayed her new collection of lavender stamps. And we all learned a lot about screen-sharing in Zoom.

Judy presented three treasures she had obtained from club meetings. A stamp album of Lighthouse stamps, one from Launceston Lighthouse in Australia, a poster of Lighthouses of the world, and a stamp display panel of the 25-cent lighthouse series, including some of our other stamps, including one of the Point Loma lighthouse in CA. Neil had a cover from Alfred Lichenstein, the famous collector, and shared some of the biographical as well as philatic information about a submarine North Pole expedition..

Phil, as usual, had an interesting cover from Blackpool in 1900, which made the ocean trip to New York in 9 days, which stimulated discussion of the four to five weeks it takes now for a letter to Europe and even Victoria BC.

Cathie showed a Sousa stamp related to "The Liberty Bell March," and matched it with the Monty Python Flying Circus stamp. She also brought bell stamps related to the Literature. Rick showed the Lake Erie, Alliance & Wheeling Railroad, (L E A & W) fondly known as the Leave Early and Walk. Mark didn't have an "L" item because he's been working on his inventory. Dick showed some beautiful embroidery stamps from Lisbon, Portugal to go into his collection of embroidered stamps.

Continue upper right

Rendezvous Coin and Stamp

U.S. and Foreign Coins and Stamps

Buy • Sell • Appraisals

Wesley N. Falor P.O. Box 355
ANA,APS,ISJP Quilcene, WA
98376
(360) 796-4984
Email wftcrs@centurylink.net

Roger showed a FDC of Switzerland's first commemorative that he discovered. And Neil had a cover showing the Lexington Monument, with an appropriate inscription from the stone, which could equally apply to current events. The monument was erected in Civil War times, and the cover was dated 1896. All in all, it was another delightful two hours with friends of like mind!



Pres. Message (continued from Page 13)

We have hopes that the Aug. meeting will be back at the Library. Keep your fingers crossed. The show and tell letter for the month of Aug. is "N" as in Norway, Newfoundland, Neth. Indies, New South Wales, New Zealand, Nabha etc.. There is also an article in this newsletter by my wife Titled " When Stamps and Orchids Collide."



Late Breaking News

It's official. We are going ahead with our show. The date is Saturday, October 17th, at the Masonic Lodge. The flyer and exhibit forms can be downloaded from our website. Cathie will let us know when the first planning meeting will be held at her house. We should be in phase 3 by July.

You should know that SEAPEX has been cancelled.

Our next zoom meeting is on July 2nd. Do join if you can.

